



EMpower v2.9 Installation manual

Table of contents

Requirement	1
For installing and running EMpower:	1
Mac	3
Troubleshooting	3
Windows / Linux	4
Start the Installation.....	6
Start EMpower	7

Minimum requirements for installing and running EMpower:

	Recommended
CPU	64-bit Intel i7 equivalent or Apple Silicon
RAM	16 GB+
Screen Resolution	1920 x 1080
Installation disk space	200MB
Data disk space	50GB + <i>(depends on the survey)</i>
Internet Connection	Required to authenticate license code
SD Card reader	USB 3.0 <i>(or equivalent speed)</i> for data transfer
Monitor Size	13" +

Windows

Versions tested:

- Windows 10, 64-bit
- Windows 11, 64-bit
- Note: Windows 10S or 11S are **not** supported

Permissions required: Must be logged in as Administrator

Linux

Versions tested:

- Ubuntu 18.04, 64 bit
- Ubuntu 20.04.4, 64 bit

Permissions required: Standard user

Mac

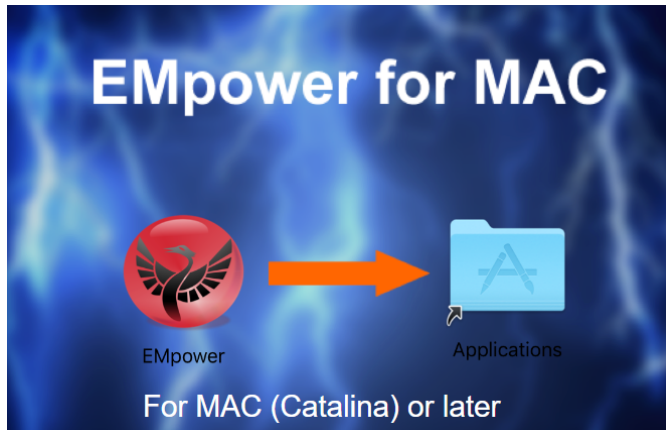
OS versions tested:

- 10.15.4, "Catalina" 64 bit
- 12.0, "Monterey" 64-bit (Apple silicon), Rosetta installed

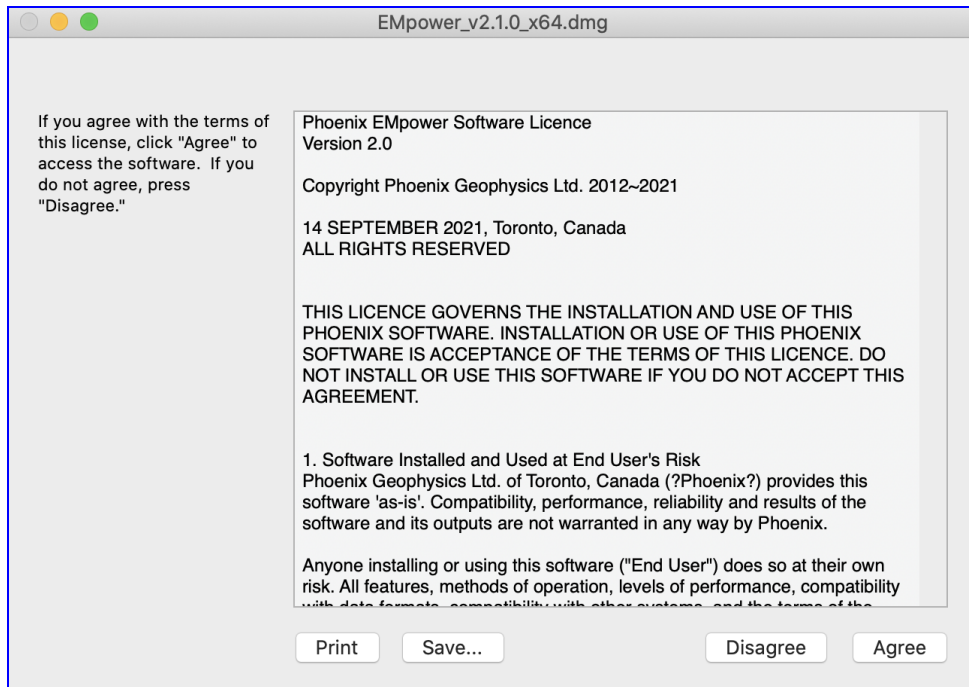
Permissions required: Standard user account

Mac

1. Drag and drop the installer onto the Applications folder to begin the installation.



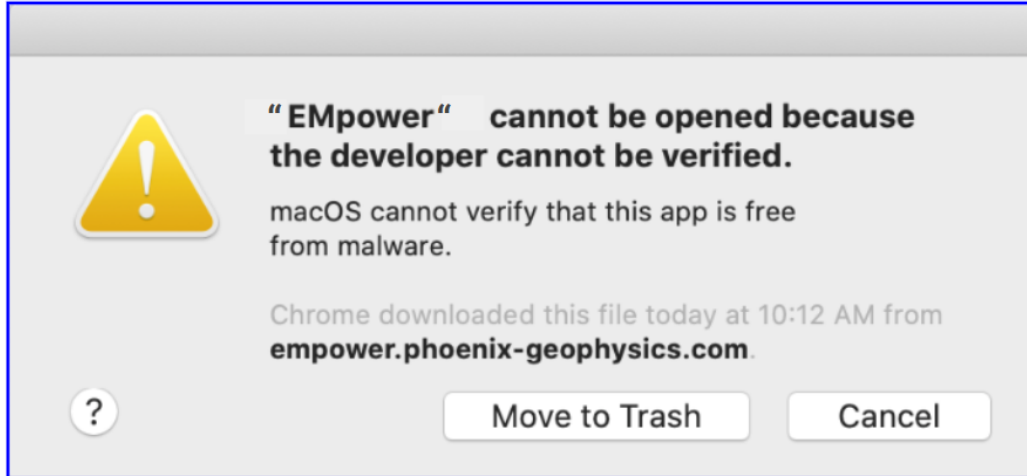
2. Read the EMpower License Agreement



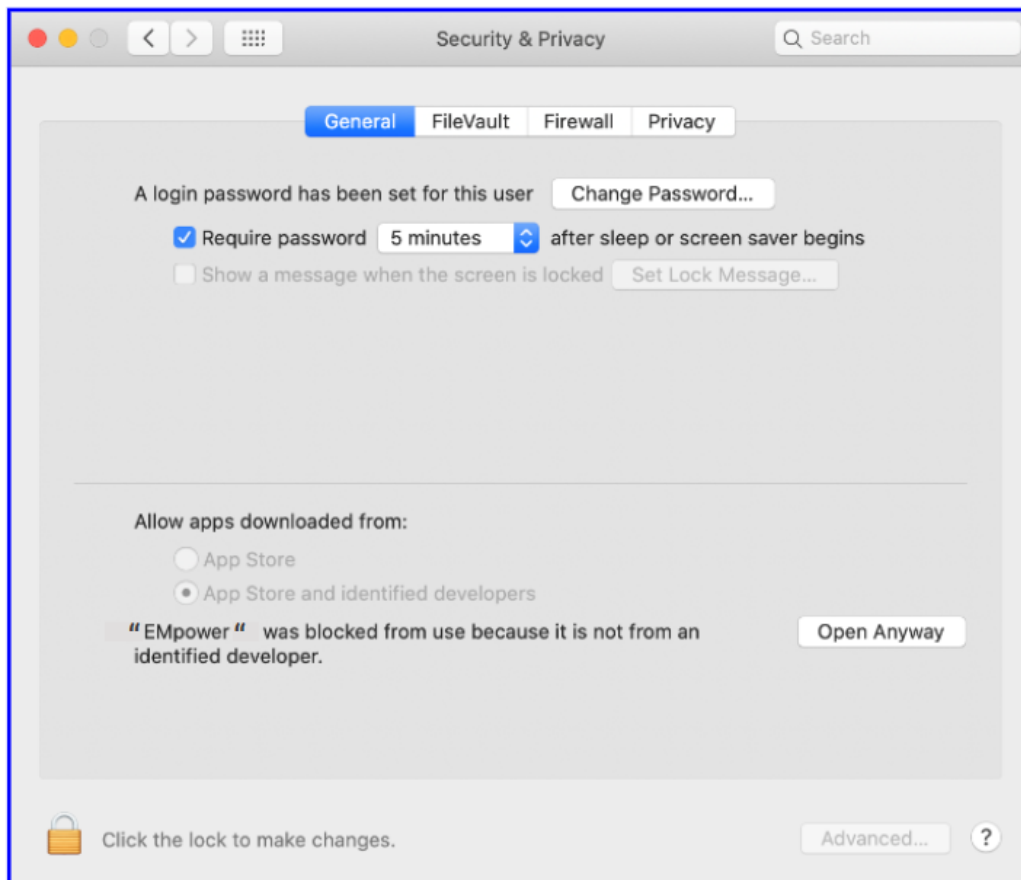
- If you agree with the terms of the EMpower license agreement, then click the **Agree** button

Troubleshooting

1. Mac OS default security settings block installing EMPower because Phoenix is not a registered developer



- 1.1. To continue the installation, go to macOS System Preferences / Security & Privacy and click on **Open Anyway**

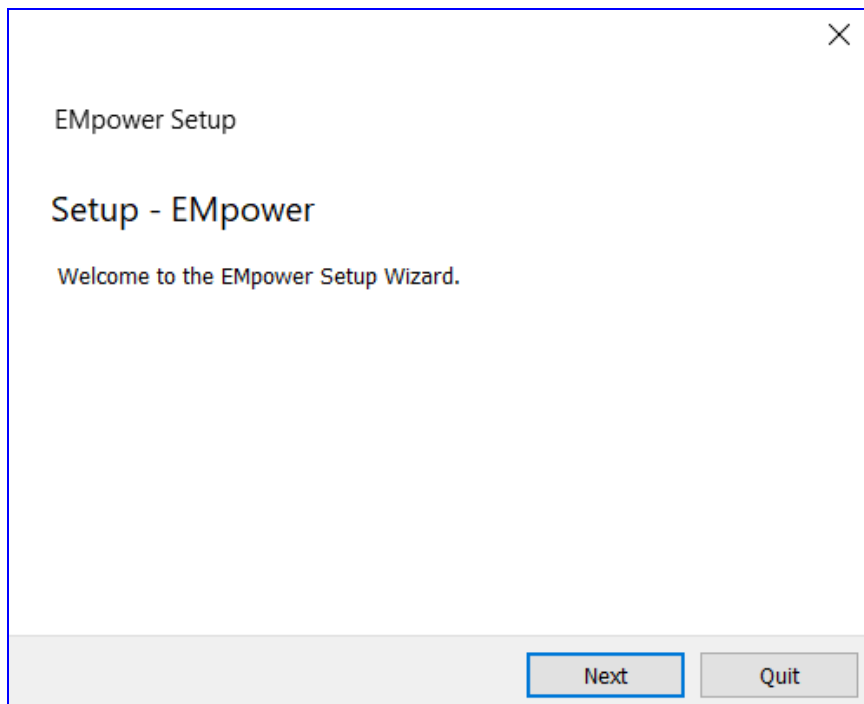


Windows / Linux

1. EMpower Setup Wizard by double clicking on the Empower installation executable file. This file will look similar to the example shown below.

Windows: EMpower_v2.###_x86_amd64.exe

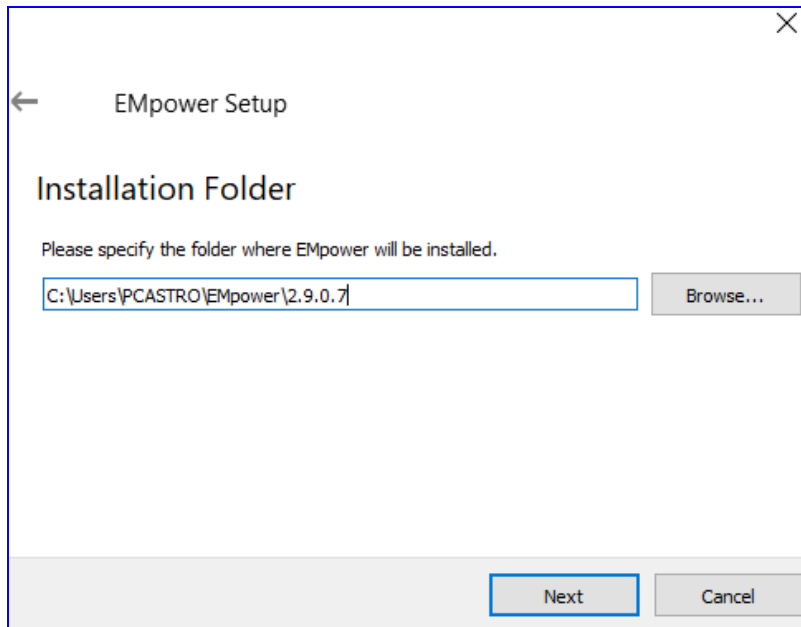
Linux: EMpower_v2.###_x_x64.run



- Click Next

2. Installation Folder

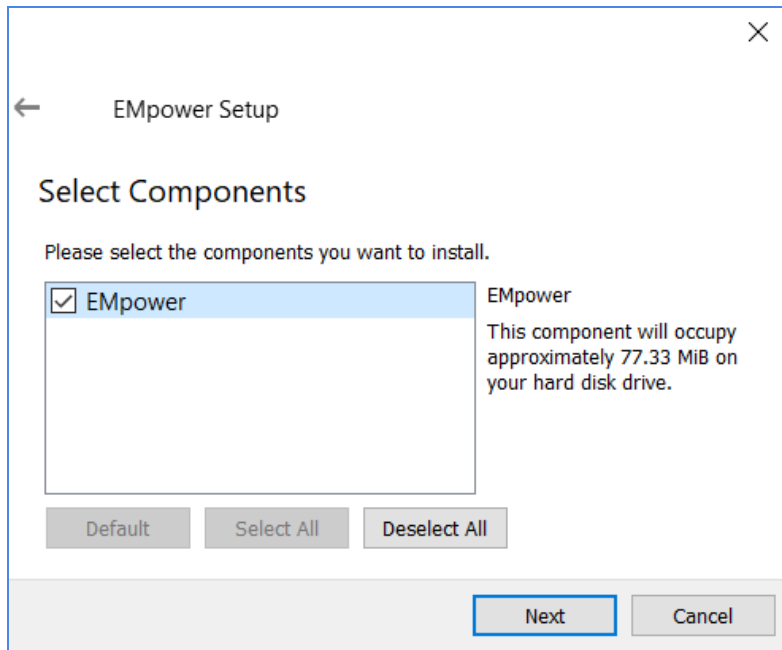
- Use the default directory from the installer, or press Browse to select a different directory



- Click Next

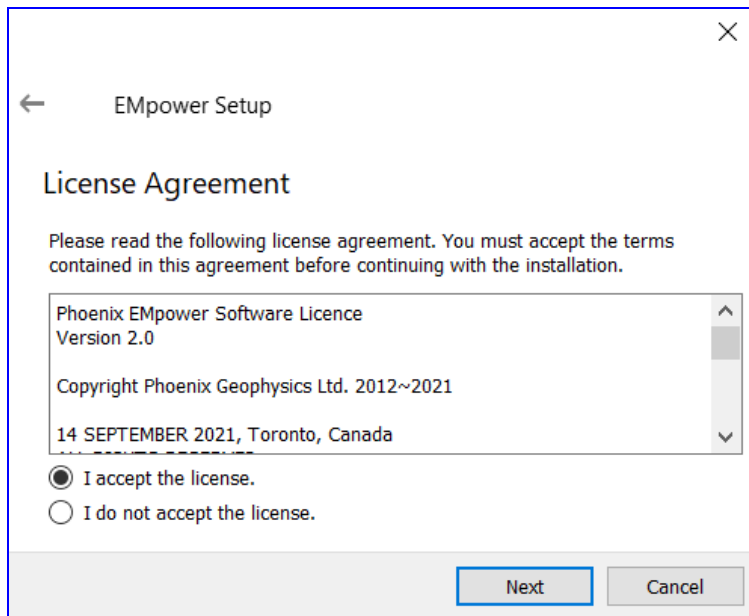
3. Hard drive memory space required

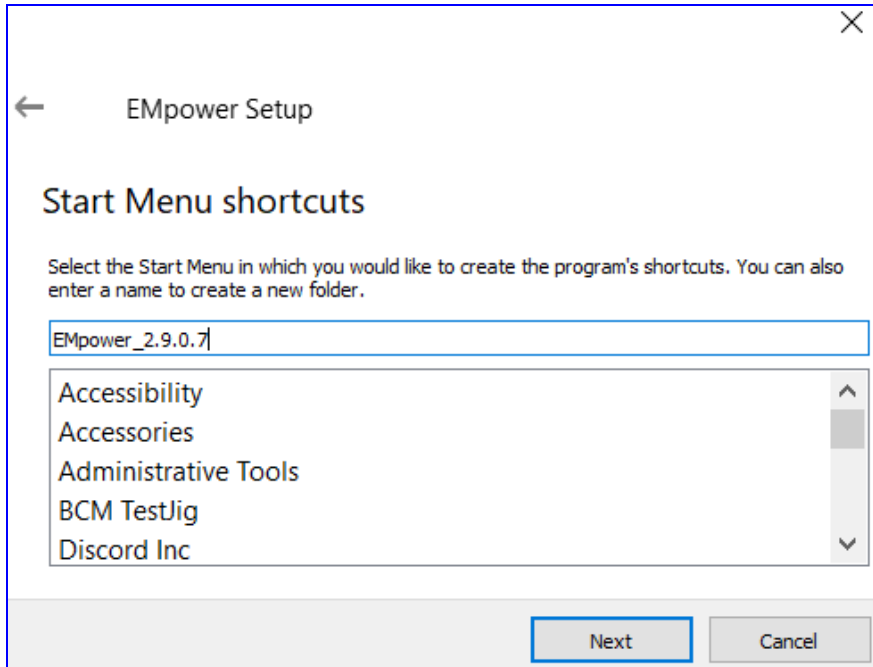
- Review the memory space requirement
- Click Next



4. Read the EMpower License Agreement.

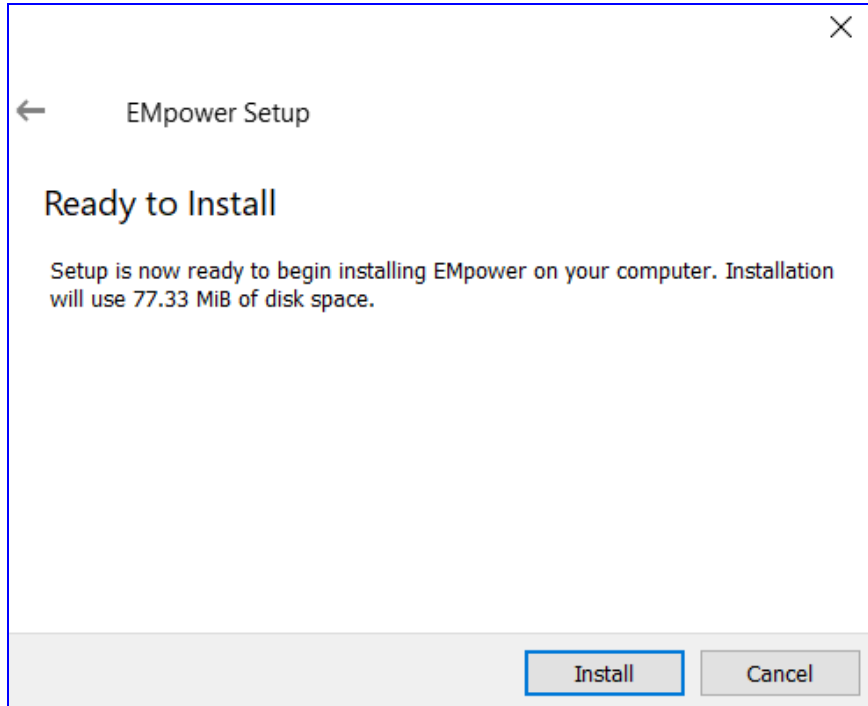
- If you agree with the terms select “**I accept the license**“ option
- Click **Next** button



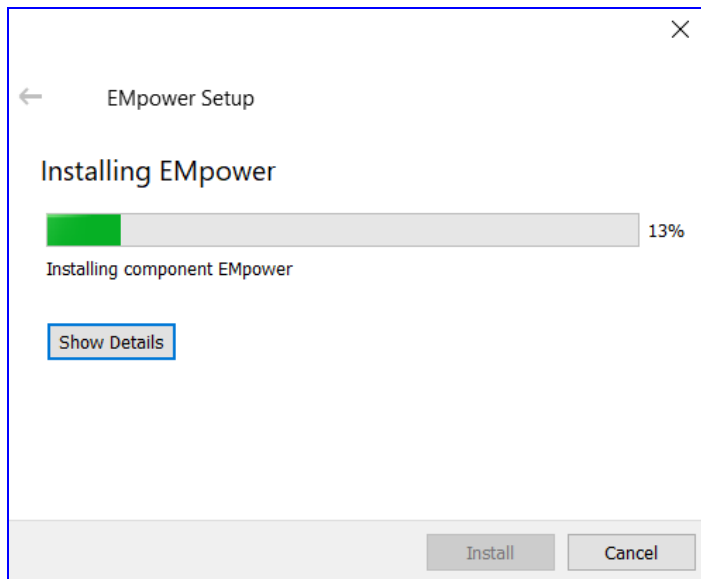


5. Start the Installation

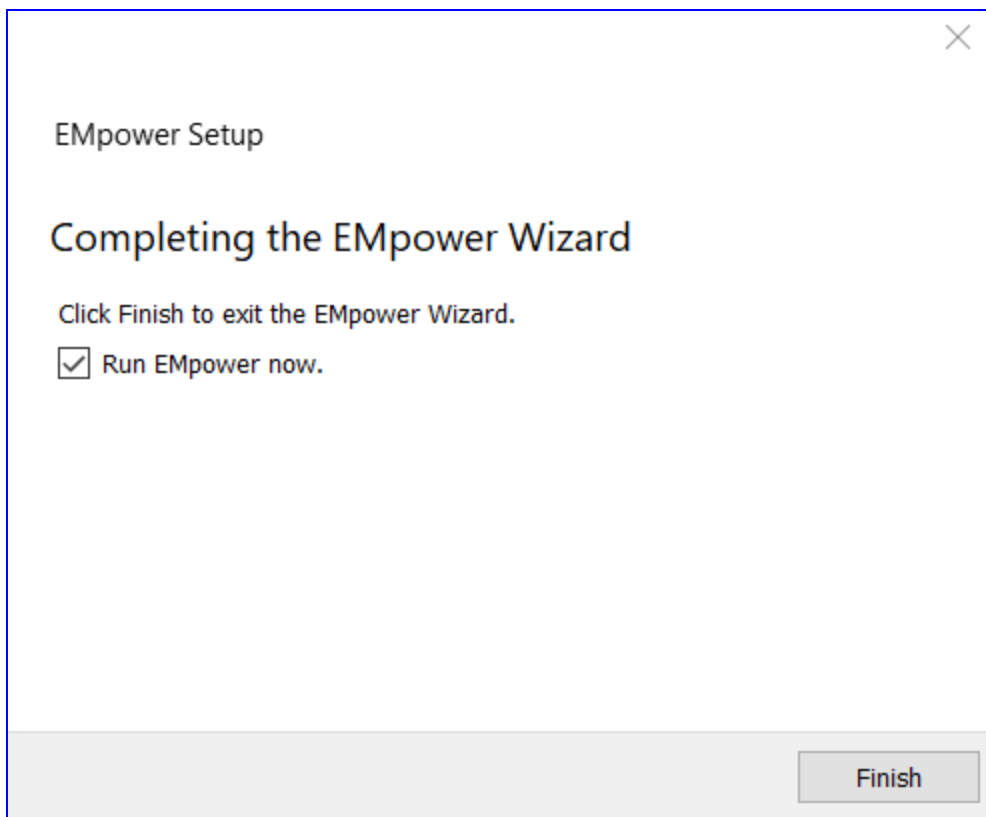
- Click the **Install** button to begin the installation



The windows installer does not have a back button.

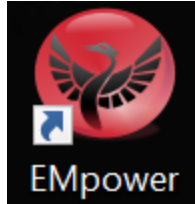


6. Click the **Finish** button to complete the EMpower installation

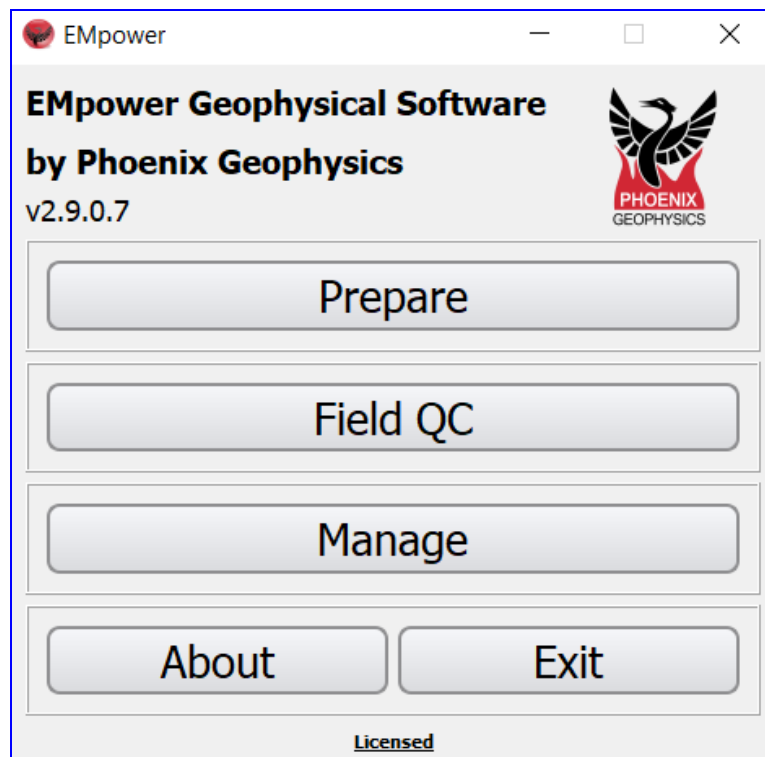


Start EMpower

1. Click the **EMpower** shortcut icon (Windows / Mac)



- In Linux, run the empower.sh script in the EMpower installation directory
2. The Text “Unlicensed” will appear at the bottom of the **EMpower** application window
 - The **Prepare** module can be used without license



3. The Manage module can only be used activating the EMpower license, (see EMpower - License activation document)



Please check out the [FAQs \(https://phoenixgeophysics.freshdesk.com/\)](https://phoenixgeophysics.freshdesk.com/)
Or email us at: support@phoenix-geophysics.com